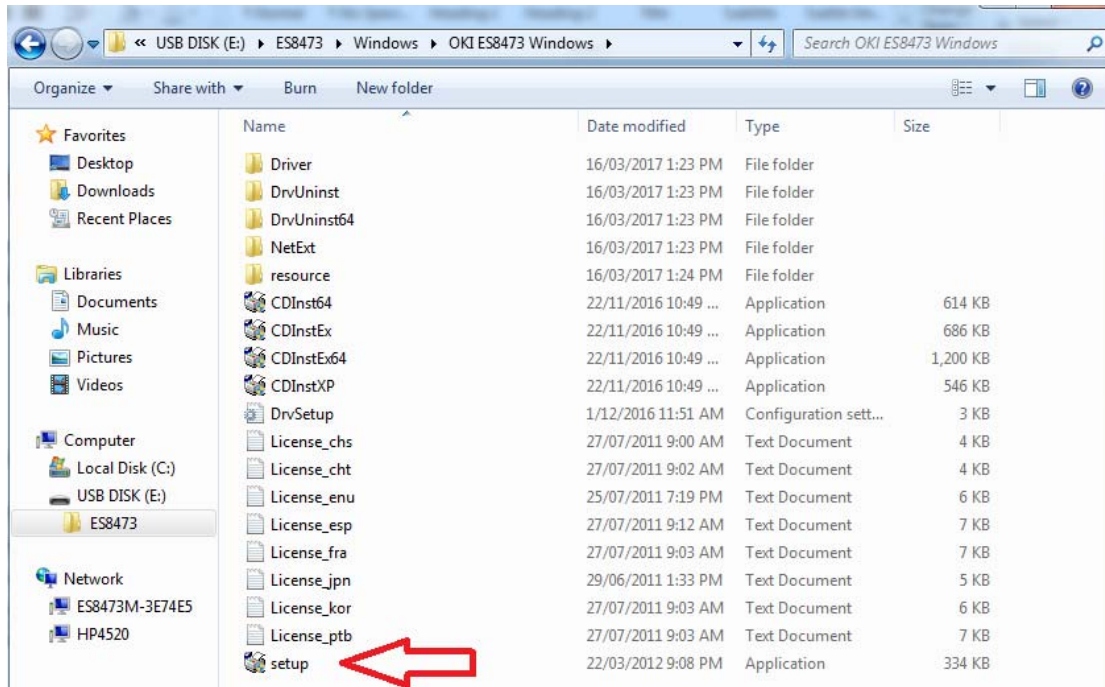
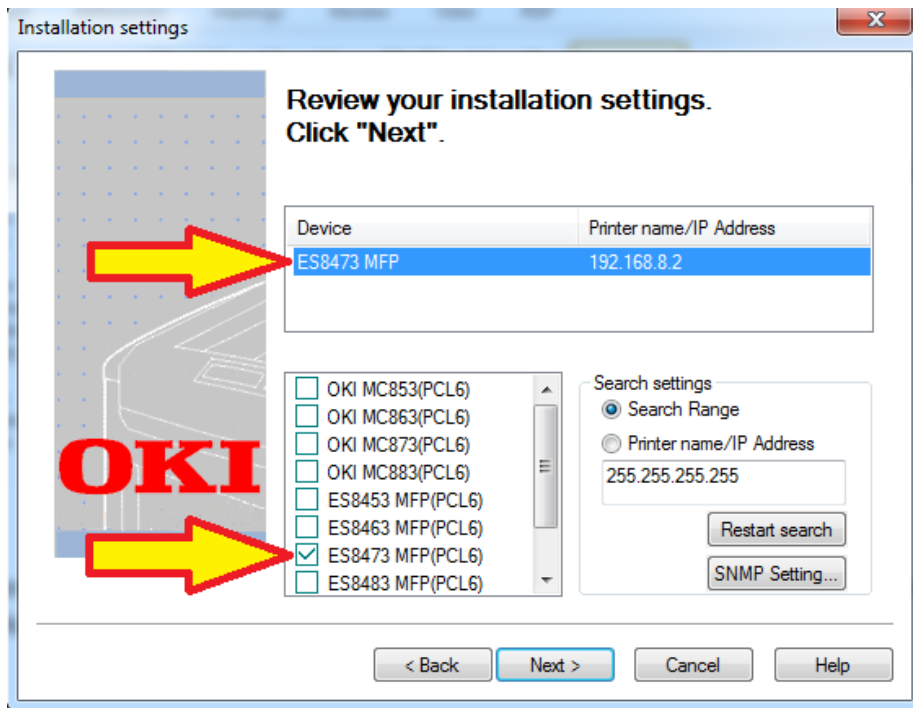


OKI ES8473 Windows Installation instructions

- Ensure you are connected to the same network as the copier/printer.
- Insert USB stick and open Windows folder, then go into the OKI ES8473 folder and double click on “Setup”.



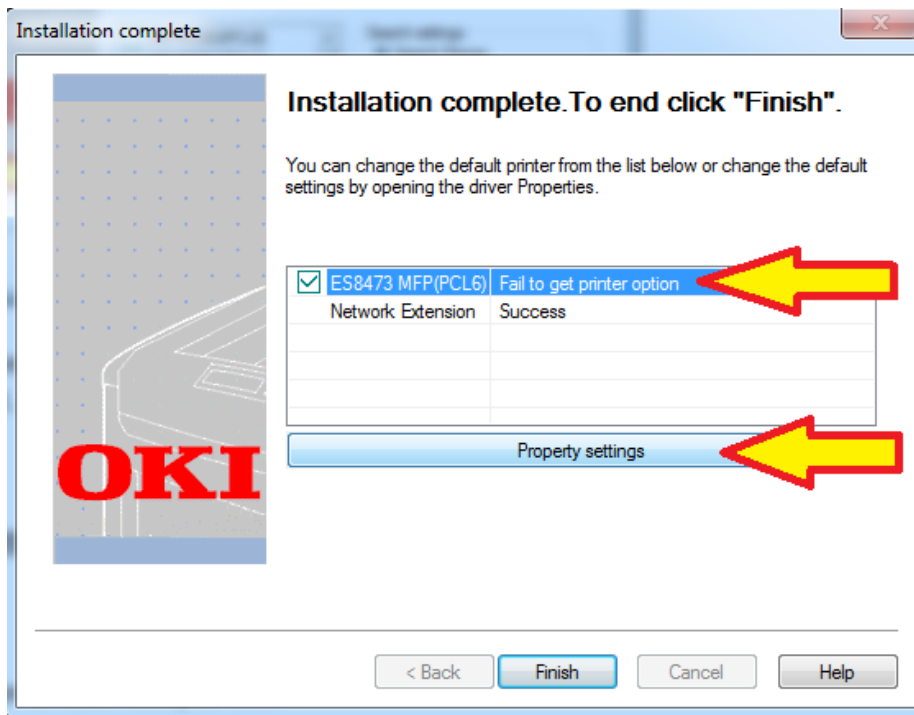
Continue through the first steps, and then select “Easy Installation – Network” – This will search the network and bring up a list of copiers found.



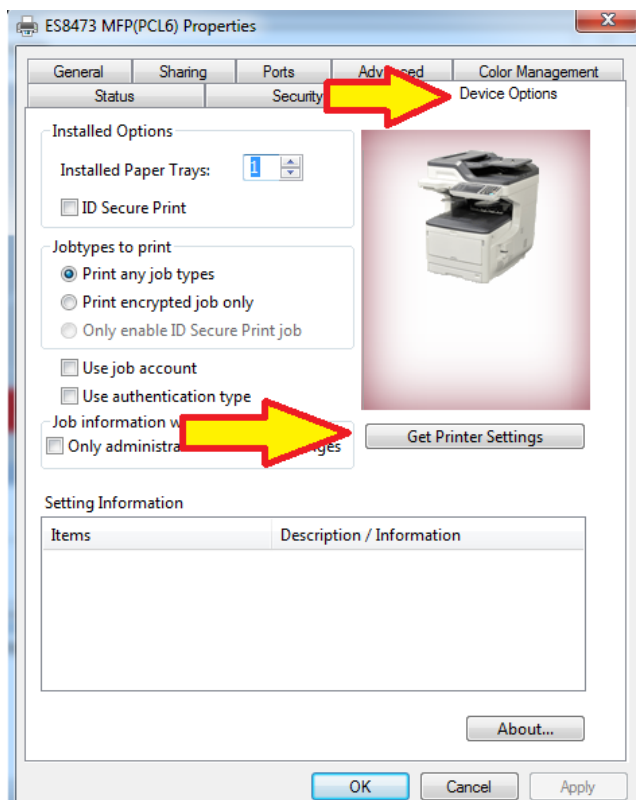
SELECT the “ES8473” at top of window, then at bottom of window **TICK** “ES8473”
Click Next. (this will install the driver software)

PLEASE ENSURE NEXT STEPS ARE FOLLOWED:

Once driver is installed, you will see the following window



Select the ES8473 from top of window, and then click on “Property Settings”



Click on the “Device Options” tab at top of window, and then click on “Get Printer Settings”

Then Click Apply, then OK. The copier/Printer is now ready to use.

If you wish to select this printer as your default printer goto Control Panel, Printers & Devices, right mouse click on the OKI ES8473 and select “Set as Default Printer”